

# iPeak+

## Технические характеристики

### По вопросам продаж и поддержки обращайтесь:

Алматы (7273)495-231	Калининград (4012)72-03-81	Омск (3812)21-46-40	Сыктывкар (8212)25-95-17
Ангарск (3955)60-70-56	Калуга (4842)92-23-67	Орел (4862)44-53-42	Тамбов (4752)50-40-97
Архангельск (8182)63-90-72	Кемерово (3842)65-04-62	Оренбург (3532)37-68-04	Тверь (4822)63-31-35
Астрахань (8512)99-46-04	Киров (8332)68-02-04	Пенза (8412)22-31-16	Тольятти (8482)63-91-07
Барнаул (3852)73-04-60	Коломна (4966)23-41-49	Петрозаводск (8142)55-98-37	Томск (3822)98-41-53
Белгород (4722)40-23-64	Кострома (4942)77-07-48	Псков (8112)59-10-37	Тула (4872)33-79-87
Благовещенск (4162)22-76-07	Краснодар (861)203-40-90	Пермь (342)205-81-47	Тюмень (3452)66-21-18
Брянск (4832)59-03-52	Красноярск (391)204-63-61	Ростов-на-Дону (863)308-18-15	Ульяновск (8422)24-23-59
Владивосток (423)249-28-31	Курск (4712)77-13-04	Рязань (4912)46-61-64	Улан-Удэ (3012)59-97-51
Владикавказ (8672)28-90-48	Курган (3522)50-90-47	Самара (846)206-03-16	Уфа (347)229-48-12
Владимир (4922)49-43-18	Липецк (4742)52-20-81	Саранск (8342)22-96-24	Хабаровск (4212)92-98-04
Волгоград (844)278-03-48	Магнитогорск (3519)55-03-13	Санкт-Петербург (812)309-46-40	Чебоксары (8352)28-53-07
Вологда (8172)26-41-59	Москва (495)268-04-70	Саратов (845)249-38-78	Челябинск (351)202-03-61
Воронеж (473)204-51-73	Мурманск (8152)59-64-93	Севастополь (8692)22-31-93	Череповец (8202)49-02-64
Екатеринбург (343)384-55-89	Набережные Челны (8552)20-53-41	Симферополь (3652)67-13-56	Чита (3022)38-34-83
Иваново (4932)77-34-06	Нижний Новгород (831)429-08-12	Смоленск (4812)29-41-54	Якутск (4112)23-90-97
Ижевск (3412)26-03-58	Новокузнецк (3843)20-46-81	Сочи (862)225-72-31	Ярославль (4852)69-52-93
Иркутск (395)279-98-46	Ноябрьск (3496)41-32-12	Ставрополь (8652)20-65-13	
Казань (843)206-01-48	Новосибирск (383)227-86-73	Сургут (3462)77-98-35	
Россия +7(495)268-04-70	Киргизия +996(312)-96-26-47	Казахстан +7(7172)727-132	

# iPeak®+

## Lateral Flow Reader



### Main Benefits

#### Connect & integrate!

Transmit data to portable devices such as mobile phones or tablets, cloud, LIS, LIMS, HIS, EMR. Connect the reader to local networks, or the Internet, iPeak®+ meets the requirements of different environments of use, guaranteeing the security of your data. Know more about iPeak®'s connectivity [here](#).

#### Utmost sensitivity

Detect and even quantify your target molecules even if they are in low concentrations thanks to the Flash Eye Technology.

#### Track the sample, track the results!

Equipped with an embedded barcode reader, read barcodes, DataMatrix, or any code on virtually any medium - paper, plastic cards, mobile phones, or LCD displays.

#### Stand alone

Portable and lightweight, iPeak®+ is ideal for any kind of environment.

#### User-friendly

4.3" capacitive and intuitive screen. It is essentially useful for non-trained professionals.

#### Compliance

CE marked. IUL sets out the criteria for a quality management system certified ISO 9001 and ISO 13485:2016 Medical devices — Quality management systems.

### Product Overview

iPeak® expands its family with the iPeak®+, colorimetric lateral flow reader for your large cassettes, up to 7 lines in one strip and up to 5 strips in one cassette.

With the breakthrough Flash Eye Technology, iPeak®+ is the perfect match for your lateral flow tests, enhancing the colors of the strip, and removing the subjectivity of the human eye.

When optics matter.



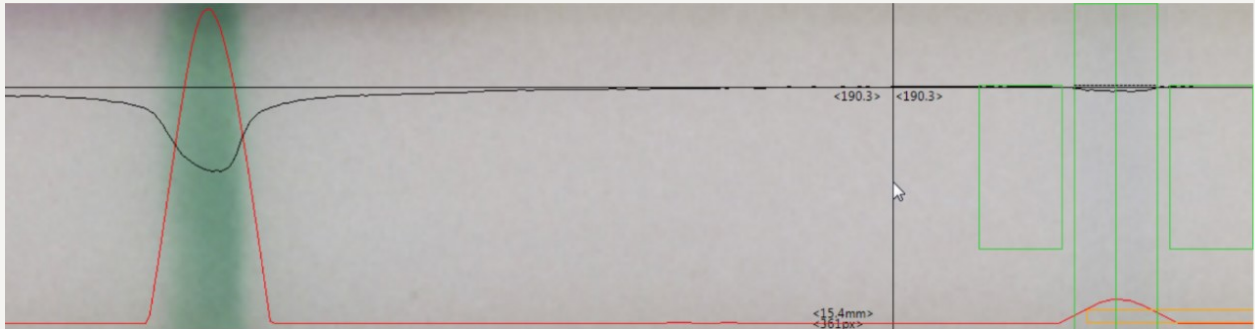
Point-of-care | Health & Veterinary Diagnostics | Food Safety | Drug testing | Environmental | Research

## Flash Eye Technology

Flash Eye Technology is the combination of excellence in image acquisition and processing and the IUL's know-how. Flash Eye technology enhances the colors of any colorimetric lateral flow test with an **outstanding dynamic range** for qualitative, and quantitative assays.

iPeak®+ brings a camera that captures the image of the test **illuminated from LED lights** situated in the most studied geometry, delivering **precise and uniform lighting**. The Flash Eye Technology allows to capture the best image of the test making the sensitivity of the reader its cornerstone.

Know more about this technology [here](#)



## How integrate iPeak®+ into your assay?

iPeak®'s built-in **R&D software** is the perfect tool to develop your cassette settings and easily implement them into your reader. Create as many methods as you need, from qualitative, semi-quantitative, and quantitative methods, the R&D software maximizes the potential of your strips and **challenges the sensitivity of the human eye**.

Free technical support is given during all the processes of the implementation.  
**You bring the biology we bring the technology.**

## Workflow



Set up as many methods as you need with the R&D Software.



Configure the reader scanning a Data Matrix with all the features of your method.



Scan your test and integrate into a laboratory information system, LIS, HIS or interact with portable devices such as Mobile Phones or Tablets, Cloud, local Networks or the Internet.



## Full Customization Available

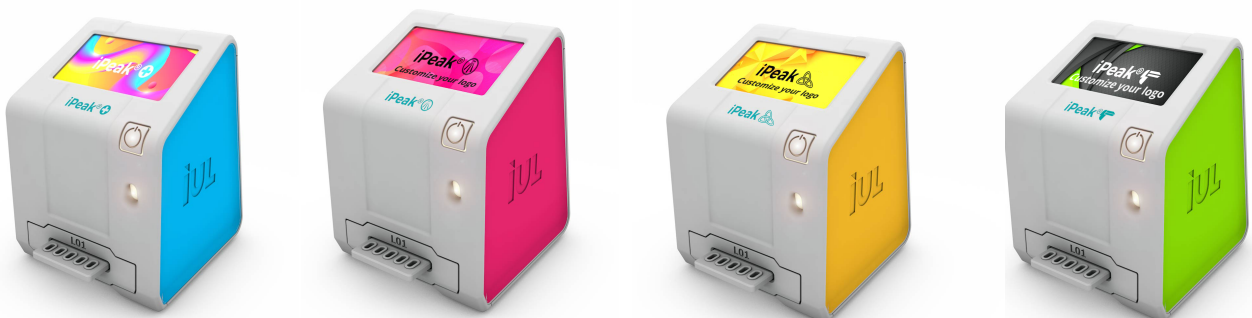
IUL offers iPeak® technology for full OEM customization in different fields of application. With its ultimate 3D printing prototyping and manufacturing technology, iPeak®+ can be customized in a fast, flexible, and affordable way with minimal time-to-market and good value for money.

Behind each project, there is a multidisciplinary team who listens to your needs and translates them into the most feasible and affordable iPeak®. IUL's experience in regulatory and international markets shorten product launch time.



## Do you want to brand your iPeak®+?

Change the colors and logos of your iPeak®+, make iPeak®+ your lateral flow reader.



## Performance and Specifications

Performance	
Internal memory	16 Gb
Stored results	Results, raw, and processed images. Depending on the internal memory
Number of test lines per strip	Up to 7 lines / strip Up to 5 strips
Measurement time	15 seconds, one strip, 2 lines
Technology	Colorimetric lateral flow reader with the IUL's Flash Eye Technology camera - based
Languages	Español, English, Deutsch, Français, Italiano, Polski, العربية

Technical Specifications	
Connectivity	WiFi, Ethernet, and LAN, Port USB for printer or export results Wi-Fi connection IEE compliant 802.11 b/g/n (2.4 GHz) Ethernet RJ-45 10/100Mbps/s
Security & Exportation	HL7 v2.8 compliant. Connections https with SSL TLSv1 TLSv1.1 TLSv1.2 TLSv1.3. Authentication: transport level 2 with token key management Also can export to an external SFTP server or directly from a slim USB
Audit Trail	HL7 v2.8 compliant. Connections https with SSL TLSv1 TLSv1.1 TLSv1.2 TLSv1.3. Authentication: transport level 2 with token key management
Sample traceability	Datamatrix, QR, and barcode
Battery	4 h autonomy
Power range	100-240 V
Frequency range	50-60 Hz
Maximum power	18 W
Air temperature	15-35°C
Relative humidity	15-75%
Place of operation	For indoor use only
Maximum dimensions of the cassette (LxWxH)	Up to 80 x 56 x 6 mm / 3.1 x 2.2 x 0.2 in
Dimensions (LxWxH)	150 x 140 x 185 mm / 5.9 x 5.5 x 7.2 in
Weight	900 g /1.98 lb
Screen	Color, capacitive, 4.3" touchscreen

## Order information

1. iPeak®+ - CAT. No. 900034000
2. Self-adjusting light drawer - CAT. No. 900012008
3. Ticket printer (Epson) - CAT. No. 90003069
4. Cable for the printer (Epson) - CAT. No. 90004874

**По вопросам продаж и поддержки обращайтесь:**

Алматы (7273)495-231  
Ангарск (3955)60-70-56  
Архангельск (8182)63-90-72  
Астрахань (8512)99-46-04  
Барнаул (3852)73-04-60  
Белгород (4722)40-23-64  
Благовещенск (4162)22-76-07  
Брянск (4832)59-03-52  
Владивосток (423)249-28-31  
Владикавказ (8672)28-90-48  
Владимир (4922)49-43-18  
Волгоград (844)278-03-48  
Вологда (8172)26-41-59  
Воронеж (473)204-51-73  
Екатеринбург (343)384-55-89  
Иваново (4932)77-34-06  
Ижевск (3412)26-03-58  
Иркутск (395)279-98-46  
Казань (843)206-01-48  
Россия +7(495)268-04-70

Калининград (4012)72-03-81  
Калуга (4842)92-23-67  
Кемерово (3842)65-04-62  
Киров (8332)68-02-04  
Коломна (4966)23-41-49  
Кострома (4942)77-07-48  
Краснодар (861)203-40-90  
Красноярск (391)204-63-61  
Курск (4712)77-13-04  
Липецк (4742)52-20-81  
Магнитогорск (3519)55-03-13  
Москва (495)268-04-70  
Мурманск (8152)59-64-93  
Набережные Челны (8552)20-53-41  
Нижний Новгород (831)429-08-12  
Новокузнецк (3843)20-46-81  
Ноябрьск (3496)41-32-12  
Новосибирск (383)227-86-73  
Киргизия +996(312)-96-26-47

Омск (3812)21-46-40  
Орел (4862)44-53-42  
Оренбург (3532)37-68-04  
Пенза (8412)22-31-16  
Петрозаводск (8142)55-98-37  
Псков (8112)59-10-37  
Пермь (342)205-81-47  
Ростов-на-Дону (863)308-18-15  
Рязань (4912)46-61-64  
Самара (846)206-03-16  
Саранск (8342)22-96-24  
Санкт-Петербург (812)309-46-40  
Саратов (845)249-38-78  
Севастополь (8692)22-31-93  
Симферополь (3652)67-13-56  
Смоленск (4812)29-41-54  
Сочи (862)225-72-31  
Ставрополь (8652)20-65-13  
Сургут (3462)77-98-35  
Казахстан +7(7172)727-132

Сыктывкар (8212)25-95-17  
Тамбов (4752)50-40-97  
Тверь (4822)63-31-35  
Тольятти (8482)63-91-07  
Томск (3822)98-41-53  
Тула (4872)33-79-87  
Тюмень (3452)66-21-18  
Ульяновск (8422)24-23-59  
Улан-Удэ (3012)59-97-51  
Уфа (347)229-48-12  
Хабаровск (4212)92-98-04  
Чебоксары (8352)28-53-07  
Челябинск (351)202-03-61  
Череповец (8202)49-02-64  
Чита (3022)38-34-83  
Якутск (4112)23-90-97  
Ярославль (4852)69-52-93